

# ASM BRASS & POLYMER VOLUMETRIC METERS IN SURFACE METER BOX.



## APPLICATION

- Pre-plumbed meter installation in a surface/ground level meter box
- Suitable for both domestic and small business applications.

## FEATURES

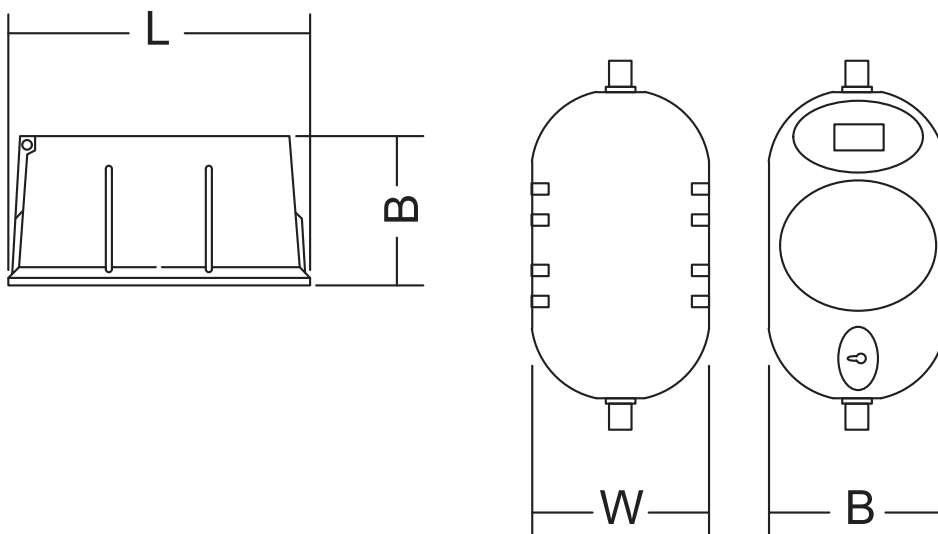
- Meter approved to SANS1529 -1: 2019 Class C specifications.
- Tamper resistant locking mechanism operated with special key.
- UV stabilised polymer lid.
- Clip on base plate. No metal pins or screws which corrode.
- Passed SABS Load Bearing Tests kN Light duty 7. (SANS 1882:2003).
- Working pressure 1600 kPa.
- Internal plumbing assembly pressure tested prior to dispatch.
- Inlet and Outlet threads 20mm Male. (Glass reinforced polymer).

## OPTIONAL EXTRAS - (To special order)

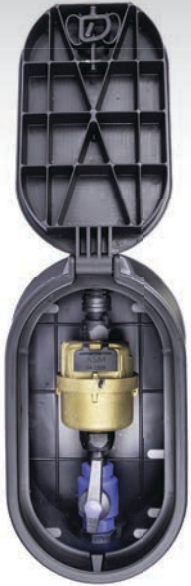
- Serviceable fine mesh strainer fitted in the 15mm meter box.
- Customer branding on the meter box lid.
- Inline manual restrictor valve.

## METER BOX DIMENSIONS TABLE

METER BOX SIZE (mm)	15mm	20mm
Meter box length (L)	300	300
Meter box width base plate (B)	198	198
Meter box width lid (W)	154	154



Please note that it is a legal requirement that all Polymer bodied meters be installed in an enclosure like a meter box.



### PLASTIC METER BOX 15mm DZR Brass ASM Volumetric Meter

**Meter Box Features:**

- Base Plate.
- UV stabilised lockable lid.
- 2 Way SABS approved plastic ball valve.
- 20mm Polymer male inlet/outlet fittings.

**Meter Specifications:**

15mm DZR brass volumetric piston meter  
114mm long with sealed wet dial, non-return valve and pulse output. Meter approved by NRCS to Class C specifications.  
(SANS 1529-1:2019)



### PLASTIC METER BOX 20mm DZR Brass ASM Volumetric Meter

**Meter Box Features:**

- Base Plate.
- UV stabilised lockable lid.
- 2 Way SABS approved plastic ball valve.
- 20mm Polymer male inlet/outlet fittings.

**Meter Specifications:**

20mm DZR brass volumetric piston meter  
165mm long with sealed wet dial, non-return valve and pulse output. Meter approved by NRCS to Class C specifications.  
(SANS 1529-1:2019)



### PLASTIC METER BOX 15mm Polymer ASM Volumetric Meter

**Meter Box Features:**

- Base Plate.
- UV stabilised lockable lid.
- 2 Way SABS approved plastic ball valve.
- 20mm Polymer male inlet/outlet fittings.

**Meter Specifications:**

15mm Polymer volumetric piston meter  
114mm long with sealed wet dial, non-return valve and pulse output. Meter approved by NRCS to Class C specifications.  
(SANS 1529-1:2019)



### PLASTIC METER BOX 20mm Polymer ASM Volumetric Meter

**Meter Box Features:**

- Base Plate.
- UV stabilised lockable lid.
- 2 Way SABS approved plastic ball valve.
- 20mm Polymer male inlet/outlet fittings.

**Meter Specifications:**

20mm Polymer volumetric piston meter  
165mm long with sealed wet dial, non-return valve and pulse output. Meter approved by NRCS to Class C specifications.  
(SANS 1529-1:2019)



### PLASTIC METER BOX 15mm Polymer ASM Volumetric Meter

**Meter Box Features:**

- Base Plate.
- UV stabilised lockable lid.
- 2 Way SABS approved plastic ball valve.
- 20mm Polymer male inlet/outlet fittings.
- Additional servicable fine mesh strainer.

**Meter Specifications:**

15mm Polymer volumetric piston meter  
114mm long with sealed wet dial, non-return valve and pulse output. Meter approved by NRCS to Class C specifications.  
(SANS 1529-1:2019)

**DOMESTIC METERS • BULK METERS • METER BOXES • SMART METERING**

Tel: +27 21 510 466  
Unit 4B, Panther Park, 11 Berkley Road, Maitland, 7405  
[www.precisionmeters.co.za](http://www.precisionmeters.co.za)

