

ELECTROMAGNETIC FLOWMETER 15mm - 3000mm



APPLICATION

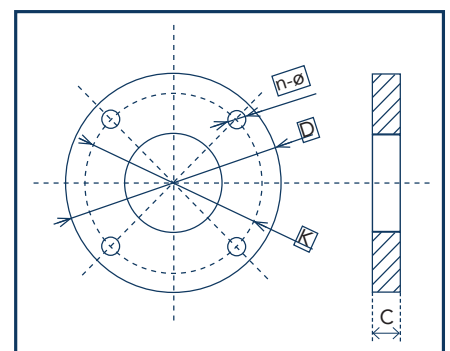
- Water abstraction.
- Water purification and desalination.
- Drinking water distribution networks.
- Revenue metering or billing.
- Leakage detection.
- Irrigation.
- Industry water.
- Cooling water.
- Wastewater.
- Sewage and sludge.
- Sea water.

FEATURES

- Meter Sizes: DN15mm to DN3000mm.
- Accuracy: +0.5%, +0.3% are selectable.
- Flow Velocity: 0.1 to 15mls.
- Medium Temperature Range: -20°C to +160°C.
- Ambient Temperature: -25°C to 60°C.
- Body Material: Carbon steel (Stainless steel optional).
- Flange Material: Carbon steel galvanized or coating, (Stainless steel optional).
- Electrode with shielding case for stable signal.
- Electrode material: SUS316, Hastelloy C, Titanium, Tantalum etc
- Electrode type: General type, scraper type and replaceable type.
- Liner material: Teflon, PFA, F46, Neoprene, Polyurethane.
- Protection class: IP67, IP68 (optional).
- Power supply: 220VAC, 24VDC, 3.6V (battery powered).
- Communication: RS232, RS485 or HART are selectable.
- Flow output: Analog output, frequency output, pulse output.
- Control output: forward I reverse, high alarm I low alarm etc.
- Control input: external zero return, external totalizer reset, external totalizer stop.
- Pulse output: active and passive, frequency and pulse width adjustable.
- Test and diagnosis: self - diagnosis, failure record, current out put test, control input I output test, emulation test mode etc.
- Others: parameter protection, indication of sensor parameter, span adjustment, zero adjust, small signal cutting, smoothing, access to external memorizer, writing No. etc.

FLANGE SCHEMATIC:

- Use in conjunction with Flange Dimensions table.



DIMENSION TABLE

DIAMETER	Pn kPa	l mm	D mm	H mm	K mm	nΦ mm	n	C mm	METER WEIGHT (K)
3	4.0	200	90	220	60	14	4	14	4
6		200	90	220	60	14	4	14	5
10		200	90	220	60	14	4	14	6
15		200	95	220	65	14	4	14	8
20		200	105	220	75	14	4	16	10
25		200	115	223	85	14	4	16	12
32		200	140	240	100	18	4	18	13
40		200	150	250	110	18	4	18	14
50		200	165	263	125	18	4	20	15
65		250	185	283	145	18	8	22	18
80		250	200	290	160	18	8	24	20
100		250	235	318	190	22	8	26	25
125		250	270	350	220	26	8	28	28
150		300	300	380	250	26	8	30	30
200		350	340	430	295	22	12	26	50
250	450	405	495	355	26	12	28	70	
300	500	460	547	410	26	12	32	95	
350	1.6	550	520	602	470	26	16	35	120
400		600	580	665	525	30	16	38	140
450		600	640	720	585	30	20	42	160
500		600	715	783	650	33	20	46	200
600		600	840	897	770	36	20	52	280
700	1.0	700	895	982	840	30	24	30	350
800		800	1015	1092	950	33	24	32	400
900		900	1115	1192	1050	33	28	34	480
1000		1000	1230	1299	1160	36	28	34	550
1200		1200	1405	1488	1340	33	32	28	660
1400		1400	1630	1700	1560	36	36	32	750
1600		1600	1830	1924	1760	36	40	34	850
1800	1800	2045	2134	1970	39	44	36	980	
2000	0.6	2000	2265	2344	2180	42	48	38	1200
2200		2200	2475	2549	2390	42	52	42	1600
2400		2400	2685	2754	2600	42	56	44	2000
2600		2600	2905	3169	2810	48	60	46	2400
2800		2800	2905	3169	3020	48	64	48	2700
3000		3000	3315	3369	3220	48	68	50	2900

FLOW RATE (m³/h) vs VELOCITY

Velocity (m/s) Size (mm)	0.5	1	2	3	4	5	15 (Max)
10	0.1414	0.2827	0.5654	0.8482	1.1309	1.4137	4.2411
15	0.3481	0.6362	1.2723	1.9085	2.5447	3.1809	9.5426
20	0.5655	1.1310	2.2619	3.3929	4.5239	5.6549	16.9646
25	0.8836	1.7671	3.5343	5.3014	7.0686	8.8357	26.5072
32	1.4476	2.8953	5.7906	8.6859	11.5812	14.4765	43.4294
40	2.2619	4.5239	9.0478	13.5717	18.0956	22.6195	67.8584
50	3.5343	7.0686	14.1372	21.2058	28.2743	35.3429	106.0288
65	5.9730	11.9459	23.8918	35.8377	47.7836	59.7295	179.1886
80	9.0478	18.0956	36.1911	54.2867	72.3823	92.4779	271.4336
100	14.1372	28.2743	56.5487	84.8230	113.0973	141.3717	424.1150
125	22.0893	44.1786	88.3573	132.5359	176.7146	220.8932	662.6797
150	31.8086	63.6173	127.2345	190.8518	254.4690	318.0863	954.2588
200	56.5787	113.0973	226.1947	339.2920	452.3893	565.4867	1696.4600
250	88.3573	176.7146	353.4292	530.1438	706.8583	833.5729	2650.7188
300	127.2345	254.4690	508.9380	763.4070	1017.8760	1272.3450	3817.0351
350	173.1803	346.3606	692.7212	1039.0818	1385.4424	1731.8030	5195.4089
400	226.1947	452.3893	904.7787	1357.1680	1809.5574	2261.9467	6785.8401
450	286.2776	572.5553	1145.1105	1717.6658	2290.2210	2862.7763	8588.3289
500	353.4292	706.8583	1413.7167	2120.5750	2827.4334	3534.2917	10608.7520
600	508.9380	1017.8760	2035.7520	3035.6281	4071.5041	5089.3801	15268.1403
700	692.7212	1385.4424	2770.8847	4156.3271	5541.7694	6927.2118	20781.6354
800	904.7787	1809.557	3619.1147	5428.6721	7238.2295	9047.7868	27143.3605
900	1145.1105	2290.2210	4580.4421	6870.6631	9047.7868	11451.1052	34353.3157
1000	1413.7167	2827.4334	5654.8668	8482.3002	11309.7336	1437.1669	42411.5008
1200	2035.7520	4071.5041	8143.0082	12214.5122	16286.0163	20357.5204	61072.5612
1400	2770.8847	5541.7694	11083.5389	16625.3083	22137.0778	27708.8472	83126.5416
1600	3619.1147	7238.2295	14476.4589	21714.6884	28952.9179	36191.1474	108573.4421
1800	4580.4420	9160.8842	18321.7684	27482.6526	36643.5367	45804.4209	137413.2627
2000	5654.8667	113097.3360	22619.4671	33929.2007	45238.9342	56548.6678	169646.0033
2200	6842.3887	13684.7776	27369.5552	41054.3328	54739.1104	68423.8880	205217.6640
2400	8143.0080	16286.0163	32572.0326	48858.0490	65144.0653	81430.0816	244290.2448
2600	9556.7247	19113.4268	38226.8536	57340.2804	76453.7072	95567.1340	286701.4020
28000	11083.5387	22167.0774	44334.1548	66501.2322	88668.3095	110835.3869	332506.1608
3000	12723.4500	25446.9001	50893.8001	76340.7002	101797.6002	127234.5003	381703.5009

DOMESTIC METERS • BULK METERS • METER BOXES • SMART METERING

Tel: +27 21 510 466
 Unit 4B, Panther Park, 11 Berkley Road, Maitland, 7405
www.precisionmeters.co.za

